



6810 Cochran Rd. • Solon, Ohio 44139  
 (800) 874-1748 • Fax (440) 914-1133  
 www.gltproducts.com

# Glass Fab Scrim

## Product Data

### GLT Resin Coated Woven Fiberglass Fabrics:

Four types of Fiberglass Resin Coated Fiberglass Scrim designed for use with tar or asphalt based waterproofing compounds and for use with surfacing mastics used on insulated indoor, outdoor and underground piping, tanks and other mechanical equipment. Temperature limit: 250F

### Advantages:

#### Glass Fabric Base:

- extremely high tensile strength
- dimensionally stable
- will not burn, rot, mildew or decay
- contour flexibility without cracking
- acid and alkali resistant

#### Resinous Coating:

- free of tackiness
- unaffected by hot storage
- unrolls with ease and uniformity
- clean and neat to handle
- colors permit emulsion match or contrast
- Federal and other code compliance

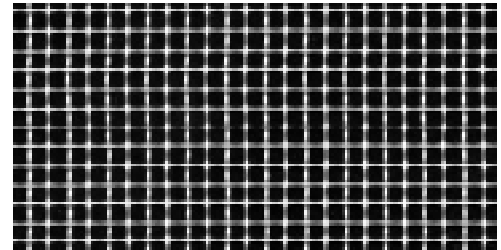
### Specifications:

- meets ASTM-D-1668-80, Part 15, specifications for woven glass fabrics treated for use in waterproofing and roofing, Type III
- standard width and length of 36" x 150' rolls
- also available as slit tapes

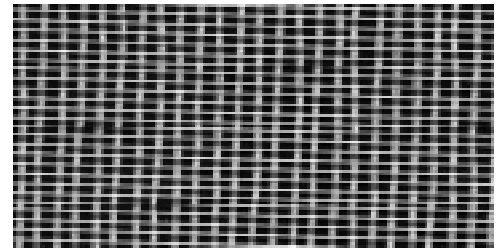
### Data:

Style	Thread Count (sq. in.)	Thickness (inch)	Wght./ Sq. Yd. (oz.)	Break Strength (lb./in.)	Available Colors
GL1659	10x10	.0042	1.64	65x70	blck/wht
GL1658	20x10	.0040	1.60	80x70	blck/wht
GL1620	20x20	.0020	1.60	80x70	blck/wht
GL37	6x6	.0096	3.97	160x155	white

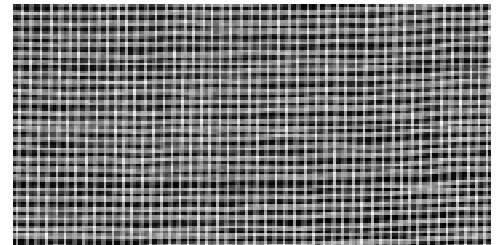
Style GL 1659



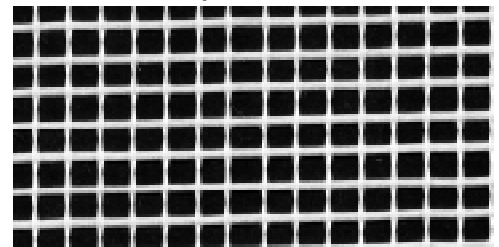
Style GL 1658



Style GL 1620



Style GL 37



Swatches available on request.